



NST

NILES

STEEL

TANK

SINCE 1898™

WATER STORAGE VESSELS BARE TANKS

- **Designed for storage of potable water up to 180° F (82° C).**
- **All tanks are constructed and certified** – in accordance with ASME IV, Part HLW for 125 PSI (862 kPa).
- **Glass lined steel tank** - Niles Steel Tank's Ultonium™ lining is applied to the interior surface of the steel providing a tough wear resistant lining which minimizes the effects of high temperature hot water.
- **Magnesium anode rod** - for protection and longer service life.
- **One 3/4" Aquastat NPT fitting** – Located in the lower part of the tank.
- **Lifting Lugs** - standard.
- **Red Oxide Primer** - Shop primer is standard on all tanks. Top coat and finish coats are available.
- **Five year limited warranty on steel tank** - provides warranty protection against tank failure resulting from defects in materials and workmanship.
- **Ten year limited warranty on steel tank (with double glass lining)** – provide superior warranty protection against tank failure. Double glass lining is not an inventory item, built upon request.



Water Storage Vessels - Bare Tanks

Bare Storage Tanks

Dimensions

| Part No. | Nominal Gal. Cap. | Actual Gal. Cap. | Vert. Ht. | Horiz. Ht. | "L" | "D" | Base Clr. "E" | "H" | Dia. | Tapping "A" | Tapping "B" | Tapping "C" | Weight @125# |
|----------|-------------------|------------------|-----------|------------|------|-------|---------------|-------|------|-------------|-------------|-------------|--------------|
| S-30-063 | 193 | 175 | 67" | 39" | 63" | 18" | 4" | 17.5" | 30" | 2.5" | 1" | 3" | 303 |
| S-30-075 | 229 | 210 | 79" | 39" | 75" | 24" | 4" | 17.5" | 30" | 2.5" | 1" | 3" | 347 |
| S-30-085 | 260 | 240 | 89" | 39" | 85" | 29" | 4" | 17.5" | 30" | 2.5" | 1" | 3" | 383 |
| S-30-099 | 303 | 280 | 103" | 39" | 99" | 36" | 4" | 17.5" | 30" | 2.5" | 1" | 3" | 433 |
| S-30-111 | 340 | 320 | 115" | 39" | 111" | 42" | 4" | 17.5" | 30" | 2.5" | 1" | 3" | 476 |
| S-36-072 | 318 | 285 | 76" | 45" | 72" | 21" | 4" | 19" | 36" | 2.5" | 1" | 3" | 491 |
| S-36-078 | 344 | 310 | 82" | 45" | 78" | 24" | 4" | 19" | 36" | 2.5" | 1" | 3" | 527 |
| S-36-085 | 375 | 340 | 89" | 45" | 85" | 27.5" | 4" | 19" | 36" | 2.5" | 1" | 3" | 569 |
| S-36-090 | 397 | 360 | 94" | 45" | 90" | 30" | 4" | 19" | 36" | 2.5" | 1" | 3" | 599 |
| S-36-102 | 449 | 415 | 106" | 45" | 102" | 36" | 4" | 19" | 36" | 2.5" | 1" | 3" | 671 |
| S-36-114 | 502 | 465 | 118" | 45" | 114" | 42" | 4" | 19" | 36" | 2.5" | 1" | 3" | 743 |
| S-36-126 | 555 | 515 | 130" | 45" | 126" | 48" | 4" | 19" | 36" | 2.5" | 1" | 3" | 815 |
| S-42-081 | 486 | 435 | 85" | 51" | 81" | 24" | 4" | 20.5" | 42" | 3" | 1" | 3" | 695 |
| S-42-084 | 504 | 453 | 88" | 51" | 84" | 25.5" | 4" | 20.5" | 42" | 3" | 1" | 3" | 716 |
| S-42-093 | 558 | 505 | 97" | 51" | 93" | 30" | 4" | 20.5" | 42" | 3" | 1" | 3" | 779 |
| S-42-105 | 630 | 575 | 109" | 51" | 105" | 36" | 4" | 20.5" | 42" | 3" | 1" | 3" | 863 |
| S-42-117 | 702 | 645 | 121" | 51" | 117" | 42" | 4" | 20.5" | 42" | 3" | 1" | 3" | 947 |
| S-42-129 | 774 | 720 | 133" | 51" | 129" | 48" | 4" | 20.5" | 42" | 3" | 1" | 3" | 1,031 |
| S-42-139 | 846 | 790 | 143" | 51" | 139" | 53" | 4" | 20.5" | 42" | 3" | 1" | 3" | 1,101 |
| S-48-073 | 572 | 500 | 77" | 57" | 73" | 18.5" | 4" | 22" | 48" | 3" | 1" | 3" | 928 |
| S-48-084 | 658 | 580 | 88" | 57" | 84" | 24" | 4" | 22" | 48" | 3" | 1" | 3" | 1,045 |
| S-48-096 | 752 | 675 | 100" | 57" | 96" | 30" | 4" | 22" | 48" | 3" | 1" | 3" | 1,173 |
| S-48-108 | 846 | 765 | 112" | 57" | 108" | 36" | 4" | 22" | 48" | 3" | 1" | 3" | 1,301 |
| S-48-120 | 940 | 840 | 124" | 57" | 120" | 42" | 4" | 22" | 48" | 3" | 1" | 3" | 1,428 |
| S-48-141 | 1128 | 1040 | 145" | 57" | 141" | 52.5" | 4" | 22" | 48" | 3" | 1" | 3" | 1,652 |
| S-54-099 | 981 | 875 | 105" | 63" | 99" | 37.5" | 6" | 25.5" | 54" | 3" | 1.5" | 3" | 1596 |
| S-54-123 | 1219 | 1110 | 129" | 63" | 123" | 49.5" | 6" | 25.5" | 54" | 3" | 1.5" | 3" | 1889 |
| S-54-147 | 1457 | 1340 | 153" | 63" | 147" | 61.5" | 6" | 25.5" | 54" | 3" | 1.5" | 3" | 2182 |
| S-54-183 | 1814 | 1690 | 189" | 63" | 183" | 79.5" | 6" | 25.5" | 54" | 3" | 1.5" | 3" | 2622 |
| S-60-114 | 1395 | 1245 | 120" | 69" | 114" | 45" | 6" | 27" | 60" | 3" | 1.5" | 3" | 2299 |
| S-60-138 | 1689 | 1530 | 144" | 69" | 138" | 57" | 6" | 27" | 60" | 3" | 1.5" | 3" | 2704 |
| S-60-168 | 1983 | 1820 | 168" | 69" | 168" | 69" | 6" | 27" | 60" | 3" | 1.5" | 3" | 3110 |
| S-60-186 | 2276 | 2105 | 192" | 69" | 186" | 81" | 6" | 27" | 60" | 3" | 1.5" | 3" | 3516 |
| S-60-210 | 2570 | 2395 | 216" | 69" | 210" | 93" | 6" | 27" | 60" | 3" | 1.5" | 3" | 3922 |
| S-72-120 | 2115 | 1865 | 126" | 81" | 120" | 48" | 6" | 30" | 72" | 3" | 1.5" | 3" | 2876 |
| S-72-144 | 2538 | 2285 | 150" | 81" | 144" | 60" | 6" | 30" | 72" | 3" | 1.5" | 3" | 3363 |
| S-72-168 | 2961 | 2700 | 174" | 81" | 168" | 72" | 6" | 30" | 72" | 3" | 1.5" | 3" | 3851 |
| S-72-192 | 3384 | 3115 | 198" | 81" | 192" | 84" | 6" | 30" | 72" | 3" | 1.5" | 3" | 4338 |
| S-72-216 | 3807 | 3530 | 222" | 81" | 216" | 94.5" | 6" | 30" | 72" | 3" | 1.5" | 3" | 4825 |
| S-72-250 | 4406 | 4120 | 256" | 81" | 250" | 113" | 6" | 30" | 72" | 3" | 1.5" | 3" | 5516 |
| S-84-138 | 3310 | 2915 | 144" | 93" | 138" | 57" | 6" | 33" | 84" | 3" | 1.5" | 3" | 4647 |
| S-84-160 | 3886 | 3480 | 168" | 93" | 162" | 69" | 6" | 33" | 84" | 3" | 1.5" | 3" | 5328 |
| S-84-186 | 4462 | 4045 | 192" | 93" | 186" | 81" | 6" | 33" | 84" | 3" | 1.5" | 3" | 6009 |
| S-84-210 | 5038 | 4610 | 216" | 93" | 210" | 93" | 6" | 33" | 84" | 3" | 1.5" | 3" | 6689 |
| S-84-256 | 6141 | 5695 | 262" | 93" | 256" | 116" | 6" | 33" | 84" | 3" | 1.5" | 3" | 7994 |

W-H-196 Test = 7.0 - 8.0 mg/in2

The W-H-196 Test is required for water heaters sold to the U.S. Government. The test consists of exposing the enamel to a boiling (212 F) 4/10% solution of Sodium Bicarbonate for eight (8), eighteen (18) hour cycles. Maximum weight loss after eight cycles is not to exceed 15 mg/in2 .

PEI T-21 Spot Acid Test = Class A

PEI T-21 Spot Acid Test is used to determine enamel resistance to acids. The test area is examined for visible effects on the enamel and is graded from Class AA (no sign of etching) to Class D (etched surface).

Impact resistance = Class 4 to 5

The Impact Resistance Test is used to determine the adhesive qualities of enamel to the substrate. The enamel is graded from Class 1 (worst) to Class 5 (best), fractured glass adhering solidly to the impact area. Class 3 is acceptable.

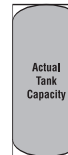
Hi-Pot Test Less than 20

The HYPO Test is a measurement of the continuity of the glass coating (Spark Test). Fifty (50) breakthroughs or fewer are the usual specification for HWT's.

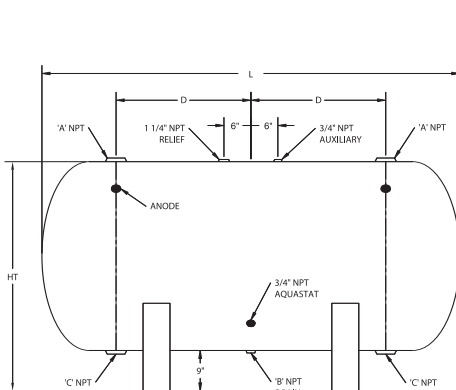
Factory Options Include:

- Epoxy LiningEX
 - Double glass coatingDG
 - Manway.....MW
 - Hand hole.....HH
 - Saddles.....SD
 - Stainless Steel constructionSS
 - 150 psi5
- Add suffix on model number to indicate options

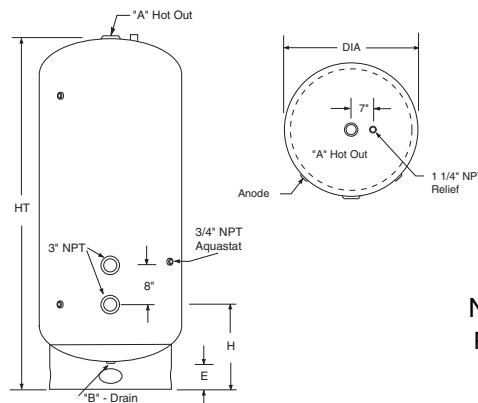
*Nominal gallon capacity is listed for comparison purposes. Nominal gallon capacity refers to a hypothetical measurement in a case where overall tank length remains the same but instead of an elliptical head and base, the gallons are calculated as if it was built with flat heads and base. - See diagram.



*Nominal capacity includes the white area in addition to actual tank capacity.



Horizontal tanks are shipped with saddles attached to the tank.



1701 Terminal Road
P.O. Box 728
Niles, Michigan 49120
PHONE 269.683.1910
FAX 269.683.1953
www.nilesst.com

A Subsidiary of **BRADFORD WHITE**

