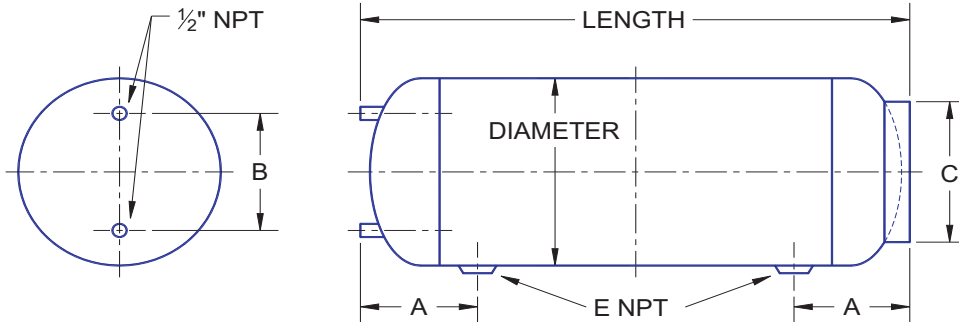




SUBMITTAL DATA
PRESSURE / COMPRESSION
PLAIN STEEL
ASME EXPANSION TANKS



Models and Dimensions

Model Number	Tank Volume (gal)	Dimensions (In.)		A (In.)	B (In.)	C (In.)	E (In.)	Ship Weight (lbs.)
		Dia.	Length					
12NA33	15	12	33	7	8	11.5	1	44
12NA51	24	12	51	7	8	11.5	1	62
14NA48	30	14	48	10	10	11.5	1	72
14NA63	40	14	63	10	10	11.5	1	92
16NA72	60	16	72	10	12	11.5	1	120
20NA62	80	20	62.5	10	16	18	1	136
20NA78	100	20	78	10	16	18	1	168
24NA65	120	24	65	11.125	20	18	1	218
24NA72	135	24	72	11.125	20	18	1	238
30NA62	175	30	62.25	13.5	22	24	1.5	338
30NA77	220	30	77	13.5	22	24	1.5	368
30NA84	240	30	84	13.5	22	24	1.5	394
30NA105	305	30	105.75	13.5	22	24	1.5	486
36NA72	295	36	72	14.75	28	30	1.5	502
36NA93	400	36	92.5	14.75	28	30	1.5	645
36NA120	505*	36	120	14.75	28	-	1.5	810
42NA96	525*	42	96	18	28	-	2	895

Thrush Type NA tanks are ASME plain carbon steel expansion tanks. They are designed to absorb the expansion forces and control the pressure in heating and cooling systems.

- * ASME design and label
- * Base ring for vertical warehousing and storage
- * Gage glass opening in head
- * Saddles available for horizontal mounting
- * Optional - Galvanized tanks

*Ring stand not provided, 11" x 15" manhole furnished on 525 gal.

Maximum Operation Conditions

	12NA33 - 16NA72	20NA62 - 42NA96
Working Temperature:	450°F	450°F
Working Pressure (PSIG):	150 PSIG	125 PSIG

Materials of Construction

Shell:	Steel
Heads:	Steel

Job Name _____
 Location _____

 Engineer _____
 Architect _____
 Sales Rep. _____
 Contractor _____

Model Number _____
 Temperature _____
 Capacity _____
 Liquid _____
 Notes _____

